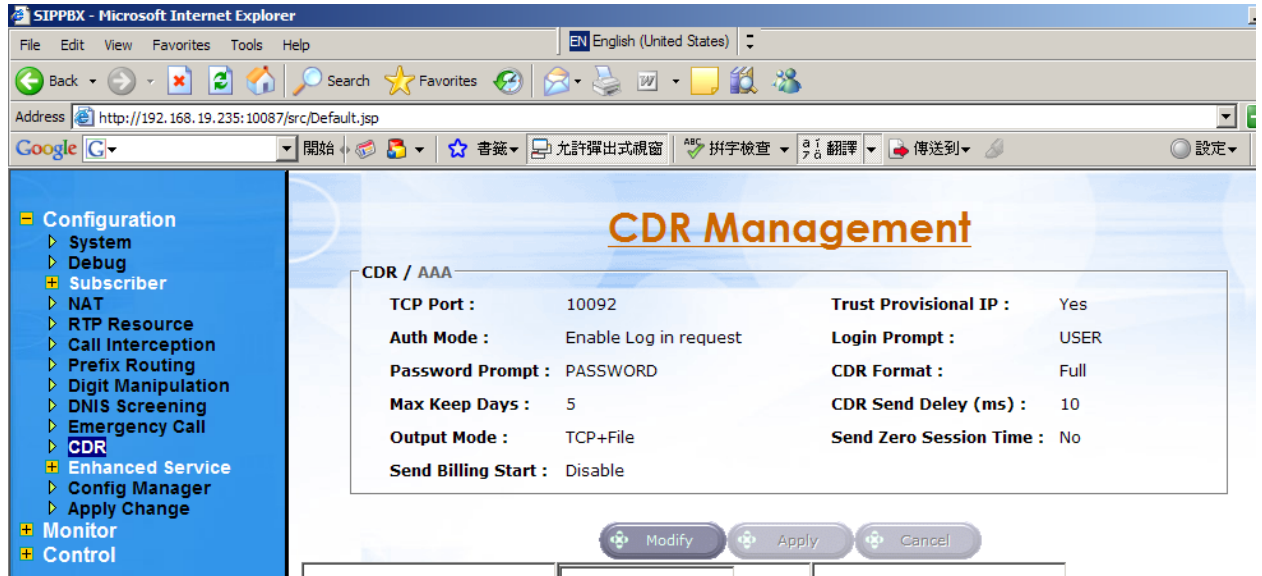


How to connect CAS2000 to Welltech SIPPBX6200.

Step 1:

Make sure your 6200 CDR settings as below

*If you changed any settings, please do Control→System→Soft Reset



The screenshot shows the SIPPBX6200 web interface in Microsoft Internet Explorer. The browser address bar shows the URL: `http://192.168.19.235:10087/src/Default.jsp`. The page title is "SIPPBX - Microsoft Internet Explorer". The interface features a blue sidebar menu on the left with the following items: Configuration (expanded), System, Debug, Subscriber, NAT, RTP Resource, Call Interception, Prefix Routing, Digit Manipulation, DNIS Screening, Emergency Call, CDR, Enhanced Service, Config Manager, Apply Change, Monitor, and Control. The main content area is titled "CDR Management" and displays the "CDR / AAA" settings in a table format:

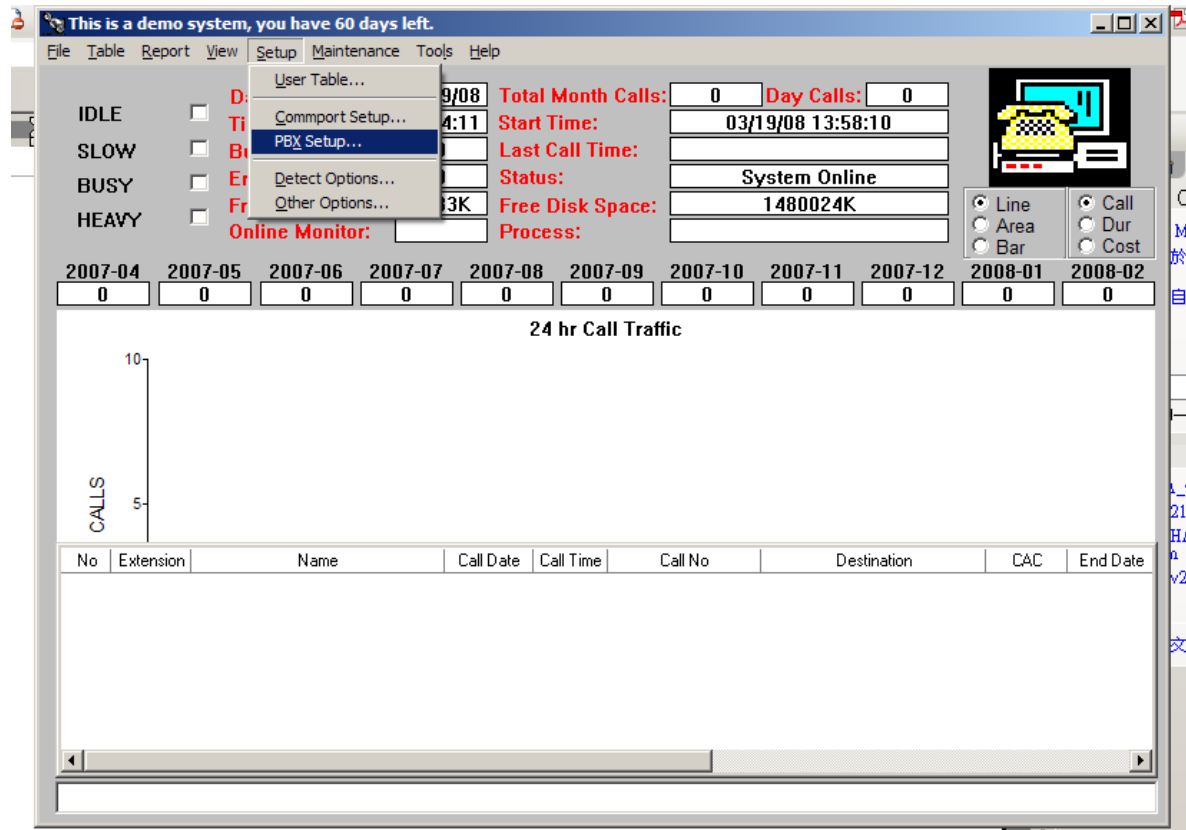
TCP Port :	10092	Trust Provisional IP :	Yes
Auth Mode :	Enable Log in request	Login Prompt :	USER
Password Prompt :	PASSWORD	CDR Format :	Full
Max Keep Days :	5	CDR Send Deley (ms) :	10
Output Mode :	TCP+File	Send Zero Session Time :	No
Send Billing Start :	Disable		

At the bottom of the settings table, there are three buttons: "Modify", "Apply", and "Cancel".

Step 2:

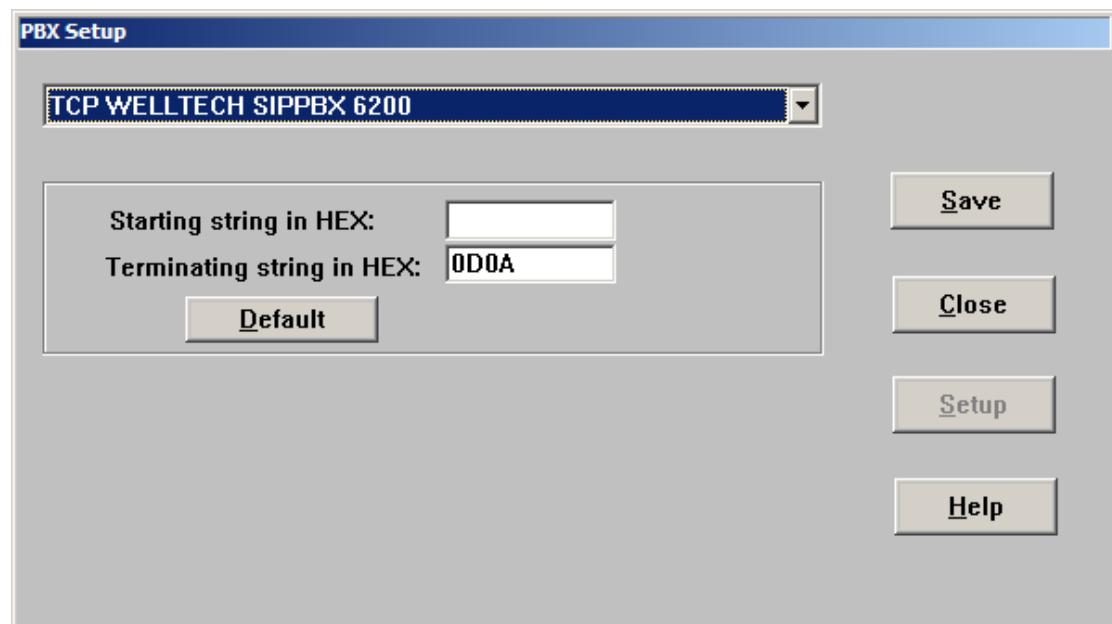
Install CAS 2000 first.(Do it by CAS 2000 user guide)

Click PBX Setup as bellow



Then change settings as bellow please.

*Make sure you selected the "TCP WELLTECH SIPPBX 6200"



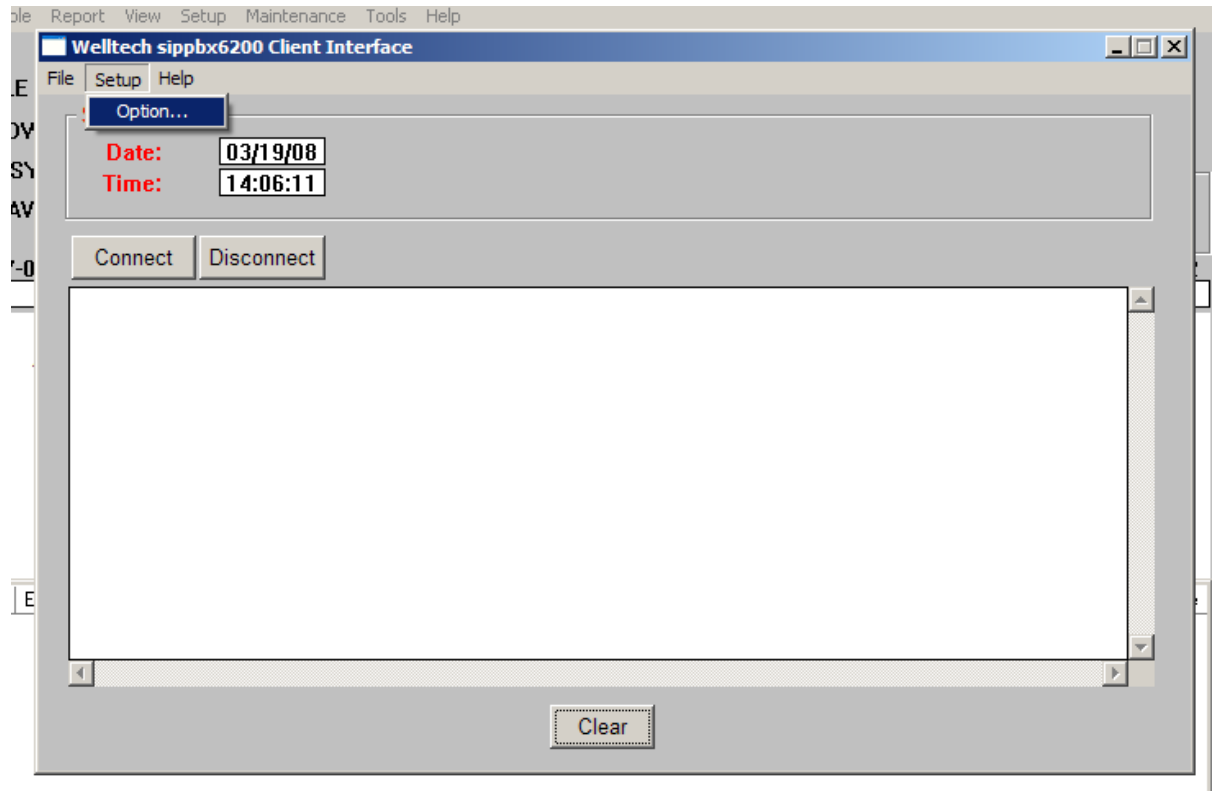
After Save and Close it.

Please Close all of CAS 2000 applications then restart it.

Step 3:

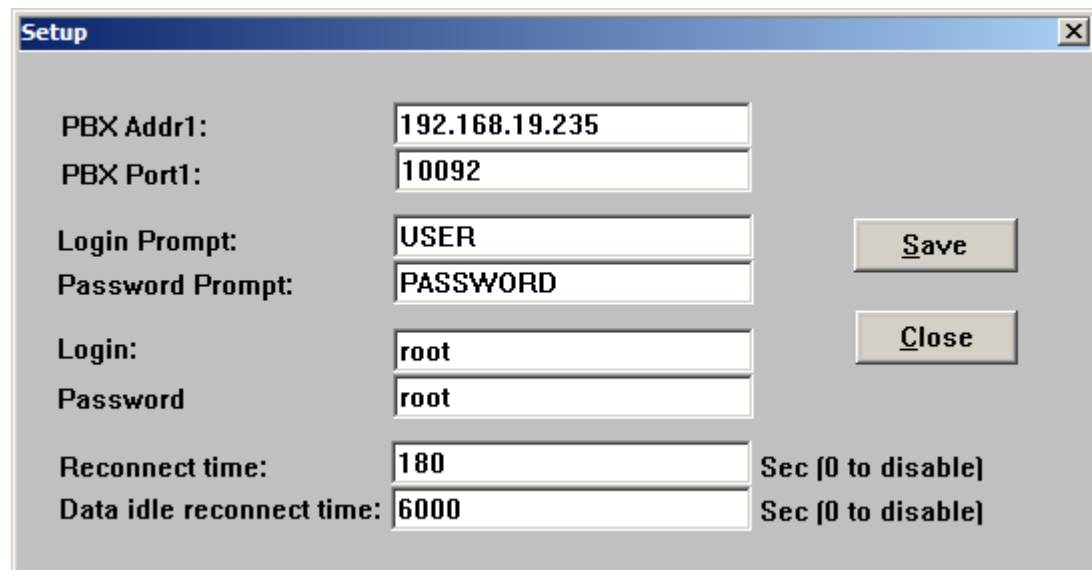
You will see bellow application after restart CAS 2000

Click Setup→Option as bellow.



Then change settings as bellow.

* PBX Addr1 : your 6200's IP address



Save then close the setup.

Click Connect button then you will see login information at this application.