

SIPPBX 6200S/GS/N V3.1 Upgrade Procedure

Prior to start the upgrade procedure, please make sure the latest 3.0 firmware is installed correctly. Please do the upgrade in local area network and make sure the SIPPBX 6200S/GS/N will not be restarted during the upgrade. Otherwise, SIPPBX 6200S GS/N might not boot correctly after upgrade.

Setp1. Backup old configuration for unexpected upgrade result or downgrade

Crate backup directory:

```
cd C:\
mkdir 6200bak
cd 6200bak
mkdir dbfile
mkdir binfile
mkdir cdr
```

FTP Backup Command:

```
ftp xxx.xxx.xxx.xxx
prompt off
binary
cd d:\
lcd c:\6200bak
cd d:\ap\binfile
lcd c:\6200bak\binfile
mget *
cd d:\ap\dbfile
lcd d:\6200bak\dbfile
mget *
cd d:\ap\cdr
lcd c:\6200bak\cdr
mget *
```

(Backup Example)

Microsoft Windows XP [Version 5.1.2600]

(C) Copyright 1985-2001 Microsoft Corp.

C:\>**ftp 192.168.19.52**

Connected to 192.168.19.52.

220 Connected to FTPD

User (192.168.19.52:(none)): **root**

331 Password required for root.

Password:

230 User root logged in.

ftp> **prompt off**

Interactive mode Off .

ftp> **binary**

200 Type is set to I.

ftp> **cd d:**

250 CWD command successful.

ftp> **lcd c:\6200bak**

Local directory now C:\6200bak.

ftp> **get wgos.sdi**

200 PORT command successful.

150 Opening BINARY mode data connection for wgos.sdi (230279680 bytes).

226 [Bytes: 230279680][Time: 218.39 s][Speed: 1029.72 K/s]

ftp: 230279680 bytes received in 218.39Seconds 1054.44Kbytes/sec.

ftp> **cd d:\ap\binfile**

250 CWD command successful.

ftp> **lcd c:\6200bak\binfile**

Local directory now C:\6200bak\binfile.

ftp> **mget ***

200 Type is set to I.

200 PORT command successful.

150 Opening BINARY mode data connection for ACD.bin (36 bytes).

226 [Bytes: 36][Time: 0.01 s][Speed: 3.52 K/s]

ftp: 36 bytes received in 0.00Seconds 36000.00Kbytes/sec.

200 PORT command successful.

150 Opening BINARY mode data connection for dbserver.bin (2918511 bytes).

226 [Bytes: 2918511][Time: 2.73 s][Speed: 1042.47 K/s]

ftp: 2918511 bytes received in 2.73Seconds 1067.49Kbytes/sec.

200 PORT command successful.

150 Opening BINARY mode data connection for OSAdmin.bin (1630534 bytes).

226 [Bytes: 1630534][Time: 1.56 s][Speed: 1018.76 K/s]
ftp: 1630534 bytes received in 1.56Seconds 1043.88Kbytes/sec.
200 PORT command successful.
150 Opening BINARY mode data connection for SiPBX.bin (5409391 bytes).
226 [Bytes: 5409391][Time: 5.11 s][Speed: 1033.98 K/s]
ftp: 5409391 bytes received in 5.11Seconds 1058.80Kbytes/sec.
200 PORT command successful.
150 Opening BINARY mode data connection for TTS00.zip (1567787 bytes).
226 [Bytes: 1567787][Time: 1.45 s][Speed: 1053.71 K/s]
ftp: 1567787 bytes received in 1.47Seconds 1067.25Kbytes/sec.
200 PORT command successful.
150 Opening BINARY mode data connection for TTS01.zip (1704642 bytes).
226 [Bytes: 1704642][Time: 1.59 s][Speed: 1044.35 K/s]
ftp: 1704642 bytes received in 1.59Seconds 1069.41Kbytes/sec.
200 PORT command successful.
150 Opening BINARY mode data connection for TTS02.zip (2384528 bytes).
226 [Bytes: 2384528][Time: 2.23 s][Speed: 1041.90 K/s]
ftp: 2384528 bytes received in 2.23Seconds 1067.38Kbytes/sec.
200 PORT command successful.
150 Opening BINARY mode data connection for wwwroot.bin (8579756 bytes).
226 [Bytes: 8579756][Time: 8.06 s][Speed: 1039.28 K/s]
ftp: 8579756 bytes received in 8.06Seconds 1064.09Kbytes/sec.
ftp> **cd d:\ap\dbfile**
250 CWD command successful.
ftp> **lcd c:\6200bak\dbfile**
Local directory now C:\6200bak\dbfile.
ftp> **mget ***
200 Type is set to I.
200 PORT command successful.
150 Opening BINARY mode data connection for aaaclient.ini (1010 bytes).
226 [Bytes: 1010][Time: 0.01 s][Speed: 98.63 K/s]
ftp: 1010 bytes received in 0.00Seconds 1010000.00Kbytes/sec.
200 PORT command successful.
150 Opening BINARY mode data connection for ACDTeller.ini (30 bytes).
226 [Bytes: 30][Time: 0.01 s][Speed: 2.93 K/s]
ftp: 30 bytes received in 0.00Seconds 30000.00Kbytes/sec.
200 PORT command successful.
150 Opening BINARY mode data connection for add2snmp.cfg (0 bytes).

226 [Bytes: 0][Time: 0.01 s][Speed: 0.00 K/s]
200 PORT command successful.
150 Opening BINARY mode data connection for Broadcasting.ini (143 bytes).
226 [Bytes: 143][Time: 0.01 s][Speed: 13.96 K/s]
ftp: 143 bytes received in 0.00Seconds 143000.00Kbytes/sec.
200 PORT command successful.
150 Opening BINARY mode data connection for CDRMgr.ini (2384 bytes).
226 [Bytes: 2384][Time: 0.01 s][Speed: 232.81 K/s]
ftp: 2384 bytes received in 0.00Seconds 2384000.00Kbytes/sec.
200 PORT command successful.
150 Opening BINARY mode data connection for ConfSipSet.ini (4226 bytes).
226 [Bytes: 4226][Time: 0.01 s][Speed: 412.70 K/s]
ftp: 4226 bytes received in 0.00Seconds 4226000.00Kbytes/sec.
200 PORT command successful.
150 Opening BINARY mode data connection for DBSQL.log (5166 bytes).
226 [Bytes: 5166][Time: 0.01 s][Speed: 504.49 K/s]
ftp: 5166 bytes received in 0.00Seconds 5166000.00Kbytes/sec.
200 PORT command successful.
150 Opening BINARY mode data connection for Deliver.ini (178 bytes).
226 [Bytes: 178][Time: 0.01 s][Speed: 17.38 K/s]
ftp: 178 bytes received in 0.00Seconds 178000.00Kbytes/sec.
200 PORT command successful.
150 Opening BINARY mode data connection for devAcl.ini (26 bytes).
226 [Bytes: 26][Time: 0.01 s][Speed: 2.54 K/s]
ftp: 26 bytes received in 0.00Seconds 26000.00Kbytes/sec.
200 PORT command successful.
150 Opening BINARY mode data connection for ENHANCE.GDB (1089536 bytes).
226 [Bytes: 1089536][Time: 1.06 s][Speed: 1001.88 K/s]
ftp: 1089536 bytes received in 1.06Seconds 1024.96Kbytes/sec.
200 PORT command successful.
150 Opening BINARY mode data connection for ENHANCE_V3.GDB (856064 bytes).
226 [Bytes: 856064][Time: 0.80 s][Speed: 1050.25 K/s]
ftp: 856064 bytes received in 0.80Seconds 1074.11Kbytes/sec.
200 PORT command successful.
150 Opening BINARY mode data connection for HA.ini (92 bytes).
226 [Bytes: 92][Time: 0.01 s][Speed: 8.98 K/s]
ftp: 92 bytes received in 0.00Seconds 92000.00Kbytes/sec.
200 PORT command successful.

150 Opening BINARY mode data connection for IPMBoardSet.ini (513 bytes).
226 [Bytes: 513][Time: 0.01 s][Speed: 50.10 K/s]
ftp: 513 bytes received in 0.00Seconds 513000.00Kbytes/sec.
200 PORT command successful.

150 Opening BINARY mode data connection for License.ini (405 bytes).
226 [Bytes: 405][Time: 0.01 s][Speed: 39.55 K/s]
ftp: 405 bytes received in 0.00Seconds 405000.00Kbytes/sec.
200 PORT command successful.

150 Opening BINARY mode data connection for Message.txt (20488 bytes).
226 [Bytes: 20488][Time: 0.02 s][Speed: 1250.49 K/s]
ftp: 20488 bytes received in 0.02Seconds 1280.50Kbytes/sec.
200 PORT command successful.

150 Opening BINARY mode data connection for Monitor.txt (24 bytes).
226 [Bytes: 24][Time: 0.01 s][Speed: 2.34 K/s]
ftp: 24 bytes received in 0.00Seconds 24000.00Kbytes/sec.
200 PORT command successful.

150 Opening BINARY mode data connection for MWI.ini (172 bytes).
226 [Bytes: 172][Time: 0.01 s][Speed: 16.80 K/s]
ftp: 172 bytes received in 0.00Seconds 172000.00Kbytes/sec.
200 PORT command successful.

150 Opening BINARY mode data connection for NATProxy.ini (357 bytes).
226 [Bytes: 357][Time: 0.01 s][Speed: 34.86 K/s]
ftp: 357 bytes received in 0.00Seconds 357000.00Kbytes/sec.
200 PORT command successful.

150 Opening BINARY mode data connection for ntpreg.reg (890 bytes).
226 [Bytes: 890][Time: 0.01 s][Speed: 86.91 K/s]
ftp: 890 bytes received in 0.00Seconds 890000.00Kbytes/sec.
200 PORT command successful.

150 Opening BINARY mode data connection for proxyserver.ini (366 bytes).
226 [Bytes: 366][Time: 0.01 s][Speed: 35.74 K/s]
ftp: 366 bytes received in 0.00Seconds 366000.00Kbytes/sec.
200 PORT command successful.

150 Opening BINARY mode data connection for RoutingTable.txt (135 bytes).
226 [Bytes: 135][Time: 0.01 s][Speed: 13.18 K/s]
ftp: 135 bytes received in 0.00Seconds 135000.00Kbytes/sec.
200 PORT command successful.

150 Opening BINARY mode data connection for SaveSubscStatus.ini (269 bytes).
226 [Bytes: 269][Time: 0.01 s][Speed: 26.27 K/s]

ftp: 269 bytes received in 0.00Seconds 269000.00Kbytes/sec.
200 PORT command successful.
150 Opening BINARY mode data connection for service.ini (35 bytes).
226 [Bytes: 35][Time: 0.01 s][Speed: 3.42 K/s]
ftp: 35 bytes received in 0.00Seconds 35000.00Kbytes/sec.
200 PORT command successful.
150 Opening BINARY mode data connection for SetRoute.bat (250 bytes).
226 [Bytes: 250][Time: 0.01 s][Speed: 24.41 K/s]
ftp: 250 bytes received in 0.00Seconds 250000.00Kbytes/sec.
200 PORT command successful.
150 Opening BINARY mode data connection for SiPBXLogo.gif (4545 bytes).
226 [Bytes: 4545][Time: 0.01 s][Speed: 443.85 K/s]
ftp: 4545 bytes received in 0.00Seconds 4545000.00Kbytes/sec.
200 PORT command successful.
150 Opening BINARY mode data connection for sippbx.ini (536 bytes).
226 [Bytes: 536][Time: 0.01 s][Speed: 52.34 K/s]
ftp: 536 bytes received in 0.00Seconds 536000.00Kbytes/sec.
200 PORT command successful.
150 Opening BINARY mode data connection for SIPPBX_Lang.ini (67 bytes).
226 [Bytes: 67][Time: 0.01 s][Speed: 6.54 K/s]
ftp: 67 bytes received in 0.00Seconds 67000.00Kbytes/sec.
200 PORT command successful.
150 Opening BINARY mode data connection for SIPPD.bak (1576960 bytes).
226 [Bytes: 1576960][Time: 1.56 s][Speed: 985.92 K/s]
ftp: 1576960 bytes received in 1.56Seconds 1008.93Kbytes/sec.
200 PORT command successful.
150 Opening BINARY mode data connection for SIPPD.ini (4010 bytes).
226 [Bytes: 4010][Time: 0.01 s][Speed: 391.60 K/s]
ftp: 4010 bytes received in 0.00Seconds 4010000.00Kbytes/sec.
200 PORT command successful.
150 Opening BINARY mode data connection for SIPPD.mdb (1769472 bytes).
226 [Bytes: 1769472][Time: 1.66 s][Speed: 1043.48 K/s]
ftp: 1769472 bytes received in 1.66Seconds 1068.52Kbytes/sec.
200 PORT command successful.
150 Opening BINARY mode data connection for sslkey (1386 bytes).
226 [Bytes: 1386][Time: 0.01 s][Speed: 135.35 K/s]
ftp: 1386 bytes received in 0.00Seconds 1386000.00Kbytes/sec.
200 PORT command successful.

150 Opening BINARY mode data connection for SysLog.ini (1082 bytes).
226 [Bytes: 1082][Time: 0.01 s][Speed: 105.66 K/s]
ftp: 1082 bytes received in 0.00Seconds 1082000.00Kbytes/sec.
200 PORT command successful.

150 Opening BINARY mode data connection for System.ini (247 bytes).
226 [Bytes: 247][Time: 0.01 s][Speed: 24.12 K/s]
ftp: 247 bytes received in 0.00Seconds 247000.00Kbytes/sec.
200 PORT command successful.

150 Opening BINARY mode data connection for Trust_IP.ini (23 bytes).
226 [Bytes: 23][Time: 0.01 s][Speed: 2.25 K/s]
ftp: 23 bytes received in 0.00Seconds 23000.00Kbytes/sec.
200 PORT command successful.

150 Opening BINARY mode data connection for updatelog.GDB (753664 bytes).
226 [Bytes: 753664][Time: 0.70 s][Speed: 1045.45 K/s]
ftp: 753664 bytes received in 0.70Seconds 1072.07Kbytes/sec.
200 PORT command successful.

150 Opening BINARY mode data connection for updatelog.mdb (585728 bytes).
226 [Bytes: 585728][Time: 0.55 s][Speed: 1045.70 K/s]
ftp: 585728 bytes received in 0.55Seconds 1070.80Kbytes/sec.
200 PORT command successful.

150 Opening BINARY mode data connection for UPDATELOG_V3.GDB (679936 bytes).
226 [Bytes: 679936][Time: 0.63 s][Speed: 1062.40 K/s]
ftp: 679936 bytes received in 0.64Seconds 1062.40Kbytes/sec.
200 PORT command successful.

150 Opening BINARY mode data connection for User.ini (158 bytes).
226 [Bytes: 158][Time: 0.01 s][Speed: 15.43 K/s]
ftp: 158 bytes received in 0.00Seconds 158000.00Kbytes/sec.
200 PORT command successful.

150 Opening BINARY mode data connection for vlan.cfg (3032 bytes).
226 [Bytes: 3032][Time: 0.01 s][Speed: 296.09 K/s]
ftp: 3032 bytes received in 0.00Seconds 3032000.00Kbytes/sec.
200 PORT command successful.

150 Opening BINARY mode data connection for VMSNotify.ini (1888 bytes).
226 [Bytes: 1888][Time: 0.01 s][Speed: 184.38 K/s]
ftp: 1888 bytes received in 0.00Seconds 1888000.00Kbytes/sec.
200 PORT command successful.

150 Opening BINARY mode data connection for VMSSet.ini (62 bytes).
226 [Bytes: 62][Time: 0.01 s][Speed: 6.05 K/s]

```
ftp: 62 bytes received in 0.00Seconds 62000.00Kbytes/sec.  
200 PORT command successful.  
150 Opening BINARY mode data connection for Weekday.ini (79 bytes).  
226 [Bytes: 79][Time: 0.01 s][Speed: 7.71 K/s]  
ftp: 79 bytes received in 0.00Seconds 79000.00Kbytes/sec.  
200 PORT command successful.  
150 Opening BINARY mode data connection for WGOS.ini (735 bytes).  
226 [Bytes: 735][Time: 0.01 s][Speed: 71.78 K/s]  
ftp: 735 bytes received in 0.00Seconds 735000.00Kbytes/sec.  
ftp> cd d:\ap\cdr  
250 CWD command successful.  
ftp> lcd c:\6200bak\cdr  
Local directory now C:\6200bak\cdr.  
ftp> mget *  
200 Type is set to I.  
200 PORT command successful.  
150 Opening BINARY mode data connection for Rept20090422.log (78 bytes).  
226 [Bytes: 78][Time: 0.01 s][Speed: 7.62 K/s]  
ftp: 78 bytes received in 0.00Seconds 78000.00Kbytes/sec.  
ftp> bye
```

Step 2: Unzip Release 3.0 Firmware

Unzip 6200s_v310.zip (or 6200gs_v310.zip, 6200n_v310.zip) to

- osadmin.bin
- sipbx.bin
- wwwroot.bin

Step 3: Upgrade Release 3.0 Firmware

Microsoft Windows XP [Version 5.1.2600]

(C) Copyright 1985-2001 Microsoft Corp.

```
C:\>cd 6200_v3.1
```

```
C:\6200_v3.0>ftp 192.168.19.52
```

Connected to 192.168.19.17.

220 Connected to FTPD

User (192.168.19.17:(none)): **root**

331 Password required for root.

Password:
230 User root logged in.
ftp> **cd d:\ap\binfile**
250 CWD command successful.
ftp> **lcd**
Local directory now C:\6200_v3.0.
ftp> **bin**
200 Type is set to I.
ftp> **prompt off**
Interactive mode Off .
ftp> **mput ***
150 Opening BINARY mode data connection for OSAdmin.bin.
226 [Bytes: 1629288][Time: 1.72 s][Speed: 926.14 K/s]
ftp: 1629288 bytes sent in 1.67Seconds 974.45Kbytes/sec.
200 PORT command successful.
150 Opening BINARY mode data connection for SiPBX.bin.
226 [Bytes: 5040312][Time: 5.77 s][Speed: 853.66 K/s]
ftp: 5040312 bytes sent in 5.70Seconds 883.80Kbytes/sec.
200 PORT command successful.
150 Opening BINARY mode data connection for wwwroot.bin.
226 [Bytes: 8561496][Time: 8.95 s][Speed: 933.86 K/s]
ftp: 8561496 bytes sent in 8.94Seconds 957.98Kbytes/sec.
ftp> **bye**

Step 4. Import "Service Setting" Call Flow

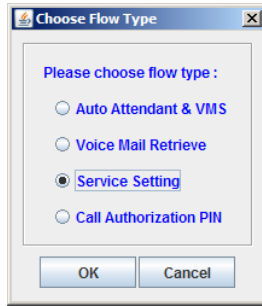
1. Download **ss_patch.zip** (service setting call flow and new voice file)

2. Unzip **ss_patch.zip** to

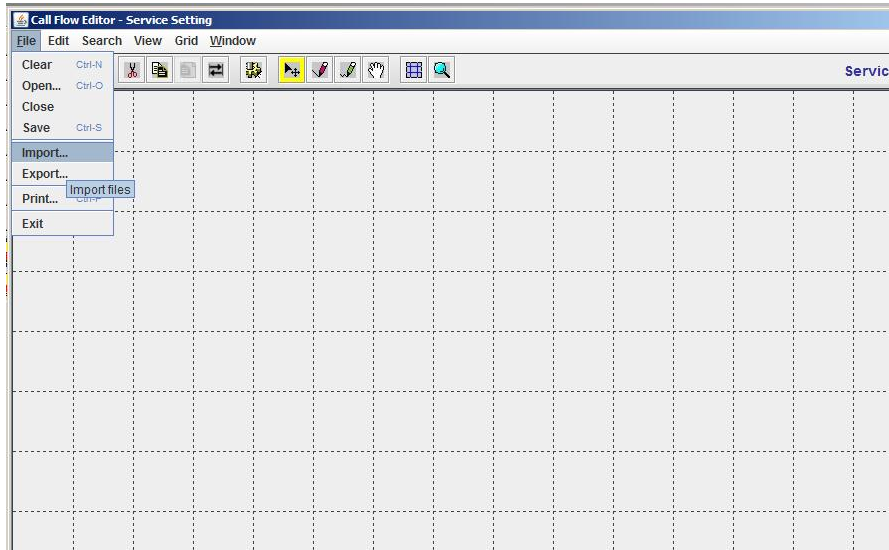
- Voice folder
- servicesetting.clf
- ca_auth_pin.clf

3. Import Service Setting Call flow

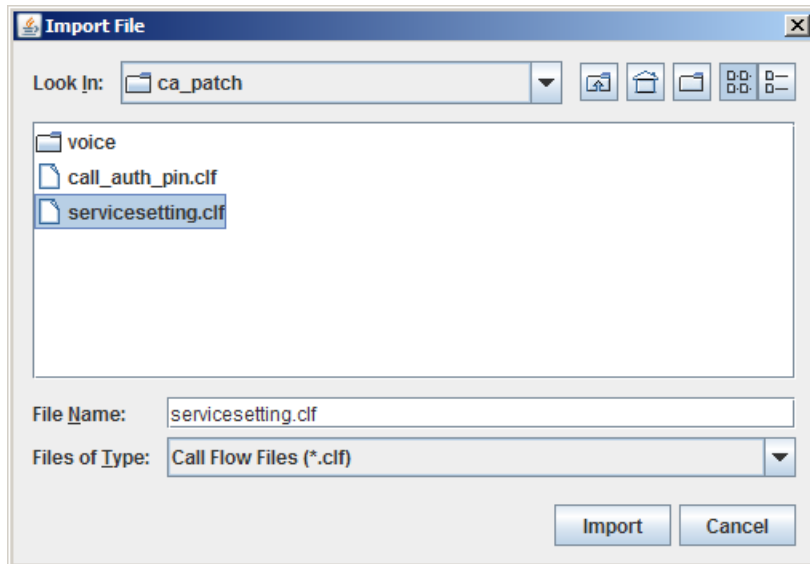
(Enhance Service > Call Flow Editor > Service Setting)



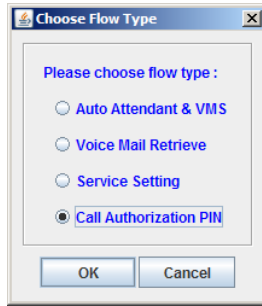
Import "servicesetting.clf" Call Flow (download from Welltech technical support)



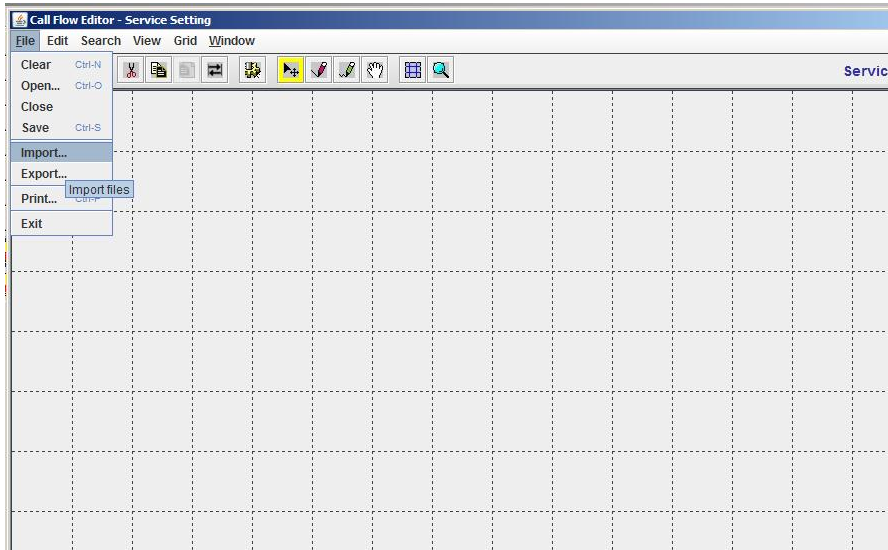
Import and Save Service setting call



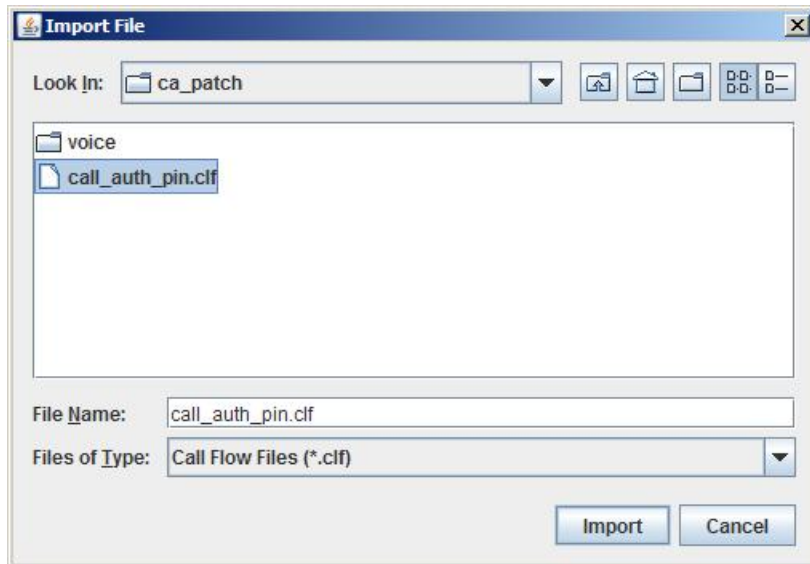
3. Import Call Auth PIN Call flow
(Enhance Service > Call Flow Editor > Call Authorization PIN)



Import "servicesetting.clf" Call Flow (download from Welltech technical support)



Import and Save Service setting call



Step 6. Add new voice file for service setting used:

FTP new voice upload Command:

```
ftp xxx.xxx.xxx.xxx
prompt off
binary
cd d:\voice\work\0
lcd c:\ss_patch\voice\work\0
mput *
cd d:\voice\work\1
lcd c:\ss_patch\voice\work\1
mput *
cd d:\voice\work\2
lcd c:\ss_patch\voice\work\2
mput *
```

(Backup Example)

```
C:\>ftp 192.168.19.52
Connected to 192.168.19.52.
220 Connected to FTPD
User (192.168.19.52:(none)): root
331 Password required for root.
Password:
230 User root logged in.
ftp> prompt off
Interactive mode Off .
ftp> binary
200 Type is set to I.
ftp> cd d:\voice\work\0
250 CWD command successful.
ftp> lcd c:\ss_patch\voice\work\0
Local directory now C:\ss_patch\voice\work\0.
ftp> mput *
200 PORT command successful.
150 Opening BINARY mode data connection for aaPleaseWait2.wav.
226 [Bytes: 71818][Time: 0.08 s][Speed: 899.16 K/s]
ftp: 71818 bytes sent in 0.09Seconds 772.24Kbytes/sec.
200 PORT command successful.
150 Opening BINARY mode data connection for rcDisableAnnounce.wav.
226 [Bytes: 22012][Time: 0.01 s][Speed: 1433.07 K/s]
ftp: 22012 bytes sent in 0.00Seconds 22012000.00Kbytes/sec.
200 PORT command successful.
150 Opening BINARY mode data connection for rcDisableBusyForward.wav.
226 [Bytes: 22340][Time: 0.02 s][Speed: 1363.53 K/s]
ftp: 22340 bytes sent in 0.00Seconds 22340000.00Kbytes/sec.
200 PORT command successful.
150 Opening BINARY mode data connection for rcDisableCallerID.wav.
226 [Bytes: 20046][Time: 0.02 s][Speed: 1223.51 K/s]
```

ftp: 20046 bytes sent in 0.00Seconds 20046000.00Kbytes/sec.
200 PORT command successful.
150 Opening BINARY mode data connection for rcDisableCallWaiting.wav.
226 [Bytes: 18116][Time: 0.01 s][Speed: 1179.43 K/s]
ftp: 18116 bytes sent in 0.00Seconds 18116000.00Kbytes/sec.
200 PORT command successful.
150 Opening BINARY mode data connection for rcDisableCRBT.wav.
226 [Bytes: 23978][Time: 0.01 s][Speed: 1561.07 K/s]
ftp: 23978 bytes sent in 0.00Seconds 23978000.00Kbytes/sec.
200 PORT command successful.

⋮

ftp> **cd d:\voicework1**
250 CWD command successful.
ftp> **lcd c:\ss_patch\voicework1**
Local directory now C:\ss_patch\voice\work\1.
ftp> **mput ***
200 PORT command successful.
150 Opening BINARY mode data connection for aaPleaseWait2.wav.
226 [Bytes: 52692][Time: 0.05 s][Speed: 1094.83 K/s]
ftp: 52692 bytes sent in 0.00Seconds 52692000.00Kbytes/sec.
200 PORT command successful.
150 Opening BINARY mode data connection for rcDisableAnnounce.wav.
226 [Bytes: 17714][Time: 0.02 s][Speed: 1081.18 K/s]
ftp: 17714 bytes sent in 0.00Seconds 17714000.00Kbytes/sec.
200 PORT command successful.
150 Opening BINARY mode data connection for rcDisableBusyForward.wav.
226 [Bytes: 19346][Time: 0.01 s][Speed: 1259.51 K/s]
ftp: 19346 bytes sent in 0.00Seconds 19346000.00Kbytes/sec.
200 PORT command successful.
150 Opening BINARY mode data connection for rcDisableCallerID.wav.
226 [Bytes: 21312][Time: 0.02 s][Speed: 1300.78 K/s]
ftp: 21312 bytes sent in 0.00Seconds 21312000.00Kbytes/sec.
200 PORT command successful.
150 Opening BINARY mode data connection for rcDisableCallWaiting.wav.
226 [Bytes: 18568][Time: 0.01 s][Speed: 1208.85 K/s]
ftp: 18568 bytes sent in 0.00Seconds 18568000.00Kbytes/sec.
200 PORT command successful.

⋮

ftp> **cd d:\voicework2**
250 CWD command successful.
ftp> **lcd c:\ss_patch\voicework2**
Local directory now C:\ss_patch\voice\work\2.
ftp> **mput ***
200 PORT command successful.
150 Opening BINARY mode data connection for aaPleaseWait2.wav.
226 [Bytes: 71818][Time: 0.08 s][Speed: 899.16 K/s]
ftp: 71818 bytes sent in 0.08Seconds 920.74Kbytes/sec.
200 PORT command successful.
150 Opening BINARY mode data connection for rcDisableAnnounce.wav.
226 [Bytes: 22012][Time: 0.01 s][Speed: 1433.07 K/s]

ftp: 22012 bytes sent in 0.00Seconds 22012000.00Kbytes/sec.
200 PORT command successful.
150 Opening BINARY mode data connection for rcDisableBusyForward.wav.
226 [Bytes: 22340][Time: 0.01 s][Speed: 1454.43 K/s]
ftp: 22340 bytes sent in 0.00Seconds 22340000.00Kbytes/sec.
200 PORT command successful.
150 Opening BINARY mode data connection for rcDisableCallerID.wav.
226 [Bytes: 20046][Time: 0.02 s][Speed: 1223.51 K/s]
ftp: 20046 bytes sent in 0.00Seconds 20046000.00Kbytes/sec.
200 PORT command successful.
150 Opening BINARY mode data connection for rcDisableCallWaiting.wav.
226 [Bytes: 18116][Time: 0.02 s][Speed: 1105.71 K/s]
ftp: 18116 bytes sent in 0.00Seconds 18116000.00Kbytes/sec.
200 PORT command successful.

⋮

ftp> **bye**

Setp7. Get New License from Welltech sales department for FAX-in Termination service

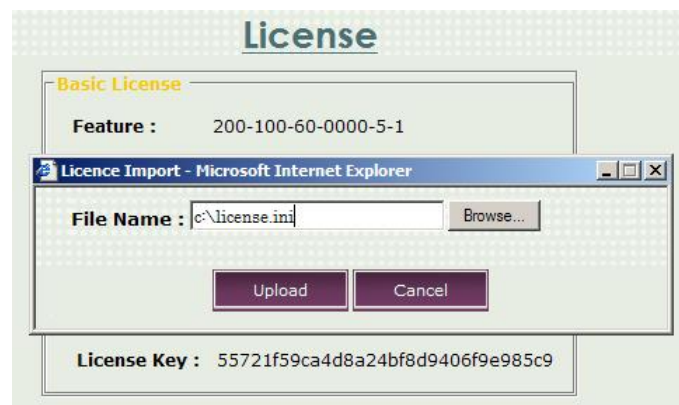
Please send the following information to you sales in order to get the new version license key.

- a. Company Name
- b. Feature
- c. S/N No.

Note: If you don't use T.38 FAX-IN Termination, you can ignore step6 and 7.

Setp8. Upgrade the new license:

(Configuration > System > License)



Setp9. Reboot SIPPBX 6200S and Check Service Status

After Reboot SIPPBX 6200S, you can see the Application: SIPPD Version: 3.0.4;
Enhance SW(S) Version: 3.1.0

Server Status

Refresh Interval (second) : 5

Proxy Status

Application :	SIPPD	Version :	3.0.4
Status :	ACTIVE	Call Attempt :	0
NAT Call :	0	NAT Fail Call :	0
Max Call :	200	Current Call :	0
Max Transaction :	800	Used Transaction :	1
Memory Pool :	2000	Used Memory :	0
Register :	2		

Service Status

Application Name :	ES (N)	Version :	3.1.0 N
Startup Time :	2009/05/14 15:33:34	Universal Channel :	136
Max Conference Room :	45	Used Conference Room :	0
Reserved Auto Attendant & VMS Channels :	2	Used Auto Attendant & VMS Channels :	0
Reserved Conference Channels :	4	Used Conference Channels :	0

SIPPBX 6200 V3.1 Downgrade to V3.0 Procedure

You need to have the backup files from **V3.1 Upgrade Procedure Step 2**. Otherwise, you cannot do the downgrade procedure.

Step 1: Restore the backup firmware and configuration

Microsoft Windows XP [Version 5.1.2600]

(C) Copyright 1985-2001 Microsoft Corp.

C:\Documents and Settings\Administrator>cd\

C:\>**cd 6200bak**

C:\6200bak>**ftp 192.168.19.52**

Connected to 192.168.19.52.

220 Connected to FTPD

User (192.168.19.52:(none)): root

331 Password required for root.

Password:

230 User root logged in.

ftp> **prompt off**

Interactive mode Off .

ftp> **binary**

200 Type is set to I.

ftp> **cd d:\ap\binfile**

250 CWD command successful.

ftp> **lcd c:\6200bak\binfile**

Local directory now C:\6200bak\binfile.

ftp> **mput ***

200 PORT command successful.

150 Opening BINARY mode data connection for ACD.bin.

226 [Bytes: 36][Time: 0.01 s][Speed: 3.52 K/s]

ftp: 36 bytes sent in 0.00Seconds 36000.00Kbytes/sec.

200 PORT command successful.

150 Opening BINARY mode data connection for dbserver.bin.

226 [Bytes: 2918511][Time: 3.20 s][Speed: 889.82 K/s]

ftp: 2918511 bytes sent in 3.19Seconds 915.47Kbytes/sec.
200 PORT command successful.
150 Opening BINARY mode data connection for OSAdmin.bin.
226 [Bytes: 1630534][Time: 1.89 s][Speed: 842.05 K/s]
ftp: 1630534 bytes sent in 1.88Seconds 869.62Kbytes/sec.
200 PORT command successful.
150 Opening BINARY mode data connection for SiPBX.bin.
226 [Bytes: 5409391][Time: 6.44 s][Speed: 820.54 K/s]
ftp: 5409391 bytes sent in 6.39Seconds 846.41Kbytes/sec.
200 PORT command successful.
150 Opening BINARY mode data connection for TTS00.zip.
226 [Bytes: 1567787][Time: 1.84 s][Speed: 830.28 K/s]
ftp: 1567787 bytes sent in 1.78Seconds 880.28Kbytes/sec.
200 PORT command successful.
150 Opening BINARY mode data connection for TTS01.zip.
226 [Bytes: 1704642][Time: 1.97 s][Speed: 845.88 K/s]
ftp: 1704642 bytes sent in 1.98Seconds 859.19Kbytes/sec.
200 PORT command successful.
150 Opening BINARY mode data connection for TTS02.zip.
226 [Bytes: 2384528][Time: 2.75 s][Speed: 846.78 K/s]
ftp: 2384528 bytes sent in 2.73Seconds 871.86Kbytes/sec.
200 PORT command successful.
150 Opening BINARY mode data connection for wwwroot.bin.
226 [Bytes: 8579756][Time: 9.81 s][Speed: 853.83 K/s]
ftp: 8579756 bytes sent in 9.77Seconds 878.62Kbytes/sec.
ftp> **cd d:\lap\cdr**
250 CWD command successful.
ftp> **lcd c:\6200bak\cdr**
:\6200bak\cdr: File not found
ftp> **lcd c:\6200bak\cdr**
Local directory now C:\6200bak\cdr.
ftp> **mput ***
200 PORT command successful.
150 Opening BINARY mode data connection for Rept20090422.log.
226 [Bytes: 78][Time: 0.01 s][Speed: 7.62 K/s]
ftp: 78 bytes sent in 0.00Seconds 78000.00Kbytes/sec.
ftp> **cd d:\lap\dbfile**
250 CWD command successful.

ftp> **lcd c:\6200bak\dbfile**

Local directory now C:\6200bak\dbfile.

ftp> **mput ***

200 PORT command successful.

150 Opening BINARY mode data connection for aaaclient.ini.

226 [Bytes: 1010][Time: 0.01 s][Speed: 98.63 K/s]

ftp: 1010 bytes sent in 0.02Seconds 63.13Kbytes/sec.

200 PORT command successful.

150 Opening BINARY mode data connection for ACDTeller.ini.

226 [Bytes: 30][Time: 0.01 s][Speed: 2.93 K/s]

ftp: 30 bytes sent in 0.00Seconds 30000.00Kbytes/sec.

200 PORT command successful.

150 Opening BINARY mode data connection for add2snmp.cfg.

226 [Bytes: 0][Time: 0.01 s][Speed: 0.00 K/s]

200 PORT command successful.

150 Opening BINARY mode data connection for Broadcasting.ini.

226 [Bytes: 143][Time: 0.01 s][Speed: 13.96 K/s]

ftp: 143 bytes sent in 0.00Seconds 143000.00Kbytes/sec.

200 PORT command successful.

150 Opening BINARY mode data connection for CDRMgr.ini.

226 [Bytes: 2384][Time: 0.02 s][Speed: 145.51 K/s]

ftp: 2384 bytes sent in 0.02Seconds 149.00Kbytes/sec.

200 PORT command successful.

150 Opening BINARY mode data connection for ConfSipSet.ini.

226 [Bytes: 4226][Time: 0.01 s][Speed: 412.70 K/s]

ftp: 4226 bytes sent in 0.00Seconds 4226000.00Kbytes/sec.

200 PORT command successful.

150 Opening BINARY mode data connection for DBSQL.log.

226 [Bytes: 5166][Time: 0.01 s][Speed: 504.49 K/s]

ftp: 5166 bytes sent in 0.00Seconds 5166000.00Kbytes/sec.

200 PORT command successful.

150 Opening BINARY mode data connection for Deliver.ini.

226 [Bytes: 178][Time: 0.01 s][Speed: 17.38 K/s]

ftp: 178 bytes sent in 0.00Seconds 178000.00Kbytes/sec.

200 PORT command successful.

150 Opening BINARY mode data connection for devAcl.ini.

226 [Bytes: 26][Time: 0.01 s][Speed: 2.54 K/s]

ftp: 26 bytes sent in 0.00Seconds 26000.00Kbytes/sec.

200 PORT command successful.

150 Opening BINARY mode data connection for ENHANCE.GDB.

226 [Bytes: 1089536][Time: 1.30 s][Speed: 820.99 K/s]
ftp: 1089536 bytes sent in 1.28Seconds 849.87Kbytes/sec.

200 PORT command successful.

425 ENHANCE_V3.GDB: The system cannot write to the file specified.

200 PORT command successful.

150 Opening BINARY mode data connection for HA.ini.

226 [Bytes: 92][Time: 0.01 s][Speed: 8.98 K/s]
ftp: 92 bytes sent in 0.00Seconds 92000.00Kbytes/sec.

200 PORT command successful.

150 Opening BINARY mode data connection for IPMBoardSet.ini.

226 [Bytes: 513][Time: 0.01 s][Speed: 50.10 K/s]
ftp: 513 bytes sent in 0.00Seconds 513000.00Kbytes/sec.

200 PORT command successful.

150 Opening BINARY mode data connection for License.ini.

226 [Bytes: 405][Time: 0.01 s][Speed: 39.55 K/s]
ftp: 405 bytes sent in 0.00Seconds 405000.00Kbytes/sec.

200 PORT command successful.

150 Opening BINARY mode data connection for Message.txt.

226 [Bytes: 20488][Time: 0.05 s][Speed: 425.70 K/s]
ftp: 20488 bytes sent in 0.03Seconds 660.90Kbytes/sec.

200 PORT command successful.

150 Opening BINARY mode data connection for Monitor.txt.

226 [Bytes: 24][Time: 0.01 s][Speed: 2.34 K/s]
ftp: 24 bytes sent in 0.00Seconds 24000.00Kbytes/sec.

200 PORT command successful.

150 Opening BINARY mode data connection for MWI.ini.

226 [Bytes: 172][Time: 0.01 s][Speed: 16.80 K/s]
ftp: 172 bytes sent in 0.00Seconds 172000.00Kbytes/sec.

200 PORT command successful.

150 Opening BINARY mode data connection for NATProxy.ini.

226 [Bytes: 357][Time: 0.01 s][Speed: 34.86 K/s]
ftp: 357 bytes sent in 0.00Seconds 357000.00Kbytes/sec.

200 PORT command successful.

150 Opening BINARY mode data connection for ntpreg.reg.

226 [Bytes: 890][Time: 0.02 s][Speed: 54.32 K/s]
ftp: 890 bytes sent in 0.00Seconds 890000.00Kbytes/sec.

200 PORT command successful.
150 Opening BINARY mode data connection for proxyserver.ini.
226 [Bytes: 366][Time: 0.01 s][Speed: 35.74 K/s]
ftp: 366 bytes sent in 0.00Seconds 366000.00Kbytes/sec.
200 PORT command successful.
150 Opening BINARY mode data connection for RoutingTable.txt.
226 [Bytes: 135][Time: 0.01 s][Speed: 13.18 K/s]
ftp: 135 bytes sent in 0.00Seconds 135000.00Kbytes/sec.
200 PORT command successful.
150 Opening BINARY mode data connection for SaveSubscStatus.ini.
226 [Bytes: 269][Time: 0.01 s][Speed: 26.27 K/s]
ftp: 269 bytes sent in 0.00Seconds 269000.00Kbytes/sec.
200 PORT command successful.
150 Opening BINARY mode data connection for service.ini.
226 [Bytes: 35][Time: 0.01 s][Speed: 3.42 K/s]
ftp: 35 bytes sent in 0.00Seconds 35000.00Kbytes/sec.
200 PORT command successful.
150 Opening BINARY mode data connection for SetRoute.bat.
226 [Bytes: 250][Time: 0.01 s][Speed: 24.41 K/s]
ftp: 250 bytes sent in 0.00Seconds 250000.00Kbytes/sec.
200 PORT command successful.
150 Opening BINARY mode data connection for SiPBXLogo.gif.
226 [Bytes: 4545][Time: 0.02 s][Speed: 277.40 K/s]
ftp: 4545 bytes sent in 0.00Seconds 4545000.00Kbytes/sec.
200 PORT command successful.
150 Opening BINARY mode data connection for sippbx.ini.
226 [Bytes: 536][Time: 0.01 s][Speed: 52.34 K/s]
ftp: 536 bytes sent in 0.00Seconds 536000.00Kbytes/sec.
200 PORT command successful.
150 Opening BINARY mode data connection for SIPPBX_Lang.ini.
226 [Bytes: 67][Time: 0.01 s][Speed: 6.54 K/s]
ftp: 67 bytes sent in 0.00Seconds 67000.00Kbytes/sec.
200 PORT command successful.
150 Opening BINARY mode data connection for SIPPD.bak.
226 [Bytes: 1576960][Time: 1.88 s][Speed: 821.33 K/s]
ftp: 1576960 bytes sent in 1.88Seconds 841.05Kbytes/sec.
200 PORT command successful.
150 Opening BINARY mode data connection for SIPPD.ini.

226 [Bytes: 4010][Time: 0.02 s][Speed: 244.75 K/s]
ftp: 4010 bytes sent in 0.01Seconds 267.33Kbytes/sec.
200 PORT command successful.
150 Opening BINARY mode data connection for SIPP.D.mdb.
226 [Bytes: 1769472][Time: 2.08 s][Speed: 831.57 K/s]
ftp: 1769472 bytes sent in 2.06Seconds 858.13Kbytes/sec.
200 PORT command successful.
150 Opening BINARY mode data connection for sslkey.
226 [Bytes: 1386][Time: 0.02 s][Speed: 84.59 K/s]
ftp: 1386 bytes sent in 0.00Seconds 1386000.00Kbytes/sec.
200 PORT command successful.
150 Opening BINARY mode data connection for SysLog.ini.
226 [Bytes: 1082][Time: 0.01 s][Speed: 105.66 K/s]
ftp: 1082 bytes sent in 0.00Seconds 1082000.00Kbytes/sec.
200 PORT command successful.
150 Opening BINARY mode data connection for System.ini.
226 [Bytes: 247][Time: 0.01 s][Speed: 24.12 K/s]
ftp: 247 bytes sent in 0.00Seconds 247000.00Kbytes/sec.
200 PORT command successful.
150 Opening BINARY mode data connection for Trust_IP.ini.
226 [Bytes: 23][Time: 0.01 s][Speed: 2.25 K/s]
ftp: 23 bytes sent in 0.00Seconds 23000.00Kbytes/sec.
200 PORT command successful.
150 Opening BINARY mode data connection for updatelog.GDB.
226 [Bytes: 753664][Time: 0.91 s][Speed: 811.47 K/s]
ftp: 753664 bytes sent in 0.89Seconds 845.86Kbytes/sec.
200 PORT command successful.
150 Opening BINARY mode data connection for updatelog.mdb.
226 [Bytes: 585728][Time: 0.64 s][Speed: 893.75 K/s]
ftp: 585728 bytes sent in 0.61Seconds 961.79Kbytes/sec.
200 PORT command successful.
150 Opening BINARY mode data connection for UPDATELOG_V3.GDB.
226 [Bytes: 679936][Time: 0.81 s][Speed: 817.73 K/s]
ftp: 679936 bytes sent in 0.80Seconds 853.12Kbytes/sec.
200 PORT command successful.
150 Opening BINARY mode data connection for User.ini.
226 [Bytes: 158][Time: 0.01 s][Speed: 15.43 K/s]
ftp: 158 bytes sent in 0.00Seconds 158000.00Kbytes/sec.

200 PORT command successful.
150 Opening BINARY mode data connection for vlan.cfg.
226 [Bytes: 3032][Time: 0.01 s][Speed: 197.40 K/s]
ftp: 3032 bytes sent in 0.00Seconds 3032000.00Kbytes/sec.
200 PORT command successful.
150 Opening BINARY mode data connection for VMSNotify.ini.
226 [Bytes: 1888][Time: 0.02 s][Speed: 115.23 K/s]
ftp: 1888 bytes sent in 0.01Seconds 125.87Kbytes/sec.
200 PORT command successful.
150 Opening BINARY mode data connection for VMSSet.ini.
226 [Bytes: 62][Time: 0.01 s][Speed: 6.05 K/s]
ftp: 62 bytes sent in 0.00Seconds 62000.00Kbytes/sec.
200 PORT command successful.
150 Opening BINARY mode data connection for Weekday.ini.
226 [Bytes: 79][Time: 0.01 s][Speed: 7.71 K/s]
ftp: 79 bytes sent in 0.00Seconds 79000.00Kbytes/sec.
200 PORT command successful.
150 Opening BINARY mode data connection for WGOS.ini.
226 [Bytes: 735][Time: 0.01 s][Speed: 71.78 K/s]
ftp: 735 bytes sent in 0.00Seconds 735000.00Kbytes/sec.
226 [Bytes: 230279680][Time: 272.38 s][Speed: 825.64 K/s]
ftp: 230279680 bytes sent in 272.34Seconds 845.55Kbytes/sec.
ftp> bye

Setp4. Reboot SIPPBX 6200 and Check Service Status

After Reboot SIPPBX 6200S, you can see the Application: SIPPD Version:3.0.3R;
Enhance SW Version: 3.0.2

Server Status

Refresh Interval (second) : 5

Proxy Status

Application :	SIPPD	Version :	3.0.3R
Status :	ACTIVE	Call Attempt :	0
NAT Call :	0	NAT Fail Call :	0
Max Call :	100	Current Call :	0
Max Transaction :	400	Used Transaction :	0
Memory Pool :	2000	Used Memory :	0
Register :	2		

Service Status

Application Name :	ES (S)	Version :	3.0.2
Startup Time :	2009/05/14 15:56:50	Universal Channel :	24
Max Conference Room :	8		
Reserved Auto Attendant & VMS Channels :	4	Used Auto Attendant & VMS Channels :	0
Reserved Conference Channels :	6	Used Conference Channels :	0