

User Guide

IP VIDEO PHONE



Contents

Chapter 1:	Introduction	1
	Welcome	1
	The Concept of VoIP	2
	What is SIP	3
Chapter 2:	Installing	4
	Package Contents	4
	Assembling the Phone	5
	Connecting to the Network	6
	Power on the Phone	7
Chapter 3:	Using the Phone	8
	Knowing Your IP Video Phone	8
	Keys/Buttons Layout	9
	Making Telephone Calls	10
	Receiving a Call	11
	Muting a Call	11
	Ending a Call	11
Chapter 4:	Setting Up the Phone	12
	Phonebook	13
	Call Records	17
	System Settings	19
	SIP Services	26
	Call Services	28
Appendix A:	Regulatory Information	31

Chapter 1 : Introduction

Welcome

Thank you for choosing the IP Video Phone. This product provides many extraordinary features:

- Streaming Video and Voice over IP networks (VoIP).
- Support SIP (Session Initiation Protocol) telephony services.
- Friendly graphical user interface with four interactive soft buttons provide most easy-to-use operations.
- Integrated 5 inches LCD panel and camera provide outstanding video quality.
- Ergonomically adjustable camera and screen position.
- Multi-function keypad for telephony operations and configurations.
- Handset and speaker-phone modes.
- Web User Interface for online configuration from web browser on your computer

Please read this user guide carefully before taking any installation action. Please contact your dealers or system integrators if you have questions.



The Concept of VoIP

The initial of Voice/Video over Internet Protocol, is the advanced technologies that provide digital voice/video conversations over the Internet or through any other IP-based network.

Few significant benefits of VoIP are:

- Cost saving. By utilizing a single network to carry voice/video and data where
- users have existing network capacity that can carry VoIP at no extra cost.
- Able to transmit multiple telephone calls down the existing IP network. It makes
- VoIP a simple way to add an extra services to home or office.
- Receiving incoming calls anywhere you are connected to IP network or Internet. User can work from anywhere with a sufficiently fast and stable Internet connection.

The diagram on right side provides an example of a VoIP network structure.

Figure 1 : VoIP Network Structures

What is SIP

SIP is the initial of Session-Initiation-Protocol; it is an application-layer control (signaling) protocol for creating, modifying, and terminating sessions with one or more participants. These sessions include Internet telephone calls, multimedia distribution, and multimedia conferences. Simply say, SIP is a most commonly used protocol that used to interconnect SIP Enabled PBXes and/or SIP User Agents to each other to establish voice and video sessions between each other over an IP Network.

This IP Video Phone implemented with advanced SIP technologies that is able to provide outstanding voice and video quality over the IP network.

The diagram on right side provides an example of a SIP infrastructures.

Figure 2 : SIP Infrastructures

Chapter 2 : Installing

Package Contents

The following items are included in your IP Video Phone package. Check this list before installation to ensure that you have received all items.

- ❶ Phone Base Unit
- ❷ Handset
- ❸ Handset Cradle and Fixing Plate
- ❹ Handset Cord
- ❺ USB Cable
- ❻ Ethernet Cable
- ❼ Power Adapter
- ❽ Quick-Installation-Guide and CD

Please contact your dealer immediately in case you are missing items.

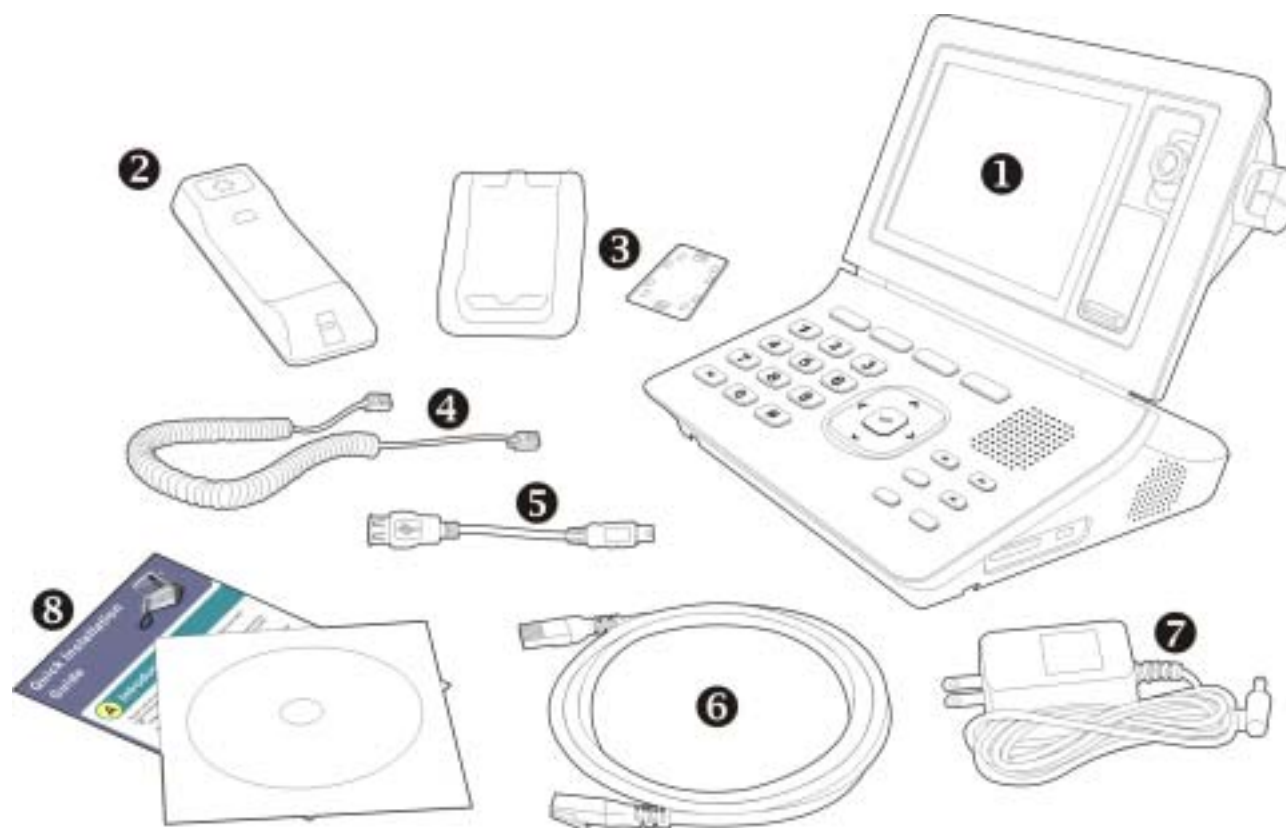


Figure 3 : Package Contents

Assembling the Phone

- Locate the longer straightened end of the handset cord, and plug this end into the back of the phone base unit.
- Plug in short straightened end of the handset cord into the jack at the bottom of the handset. Please refer to Figure 3.

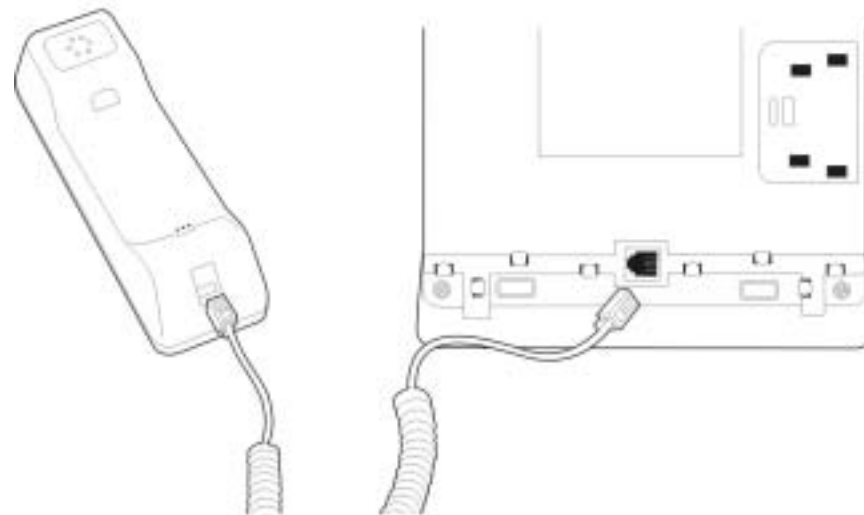


Figure 4 : Assembling the Handset

- You may fix the Handset Cradle with Phone Unit by using the bundled Fixing Plate. Please follow this procedure. Please refer to Figure 4.

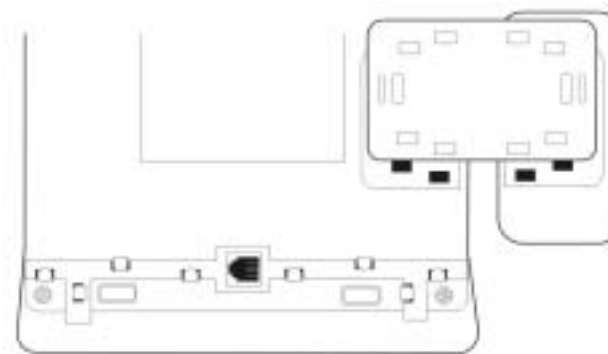


Figure 5 : Mounting the Fixing Plate

Connecting to the Network

Please identify which IP Video Phone model you have before installation. Standard model comes with only Power and LAN connectors on the back panel. Advanced model comes with extra WAN and four video/ audio ports. Please follow these steps to connect your IP Video phone:

- To connect to Ethernet network, plug in one end of Ethernet cable into LAN port of the phone base unit, and then plug in the other end to a Ethernet switch or Hub.

- Plug audio and video cables to proper ports to connect to external A/V devices such as:

Video Output – TV, VCR, etc.

Audio Output – speakers, Audio Recorder, etc.

Audio Input – Microphone, CD Player, etc.

Video Input – Camcorder, CCTV Camera,
DVD Player, etc.

(For advanced model)

- Connect the power cord of the power adapter at last. After you have made the correct connections, then plug in the AC power adapter to an electrical outlet. Use only the adapter that came with the phone.

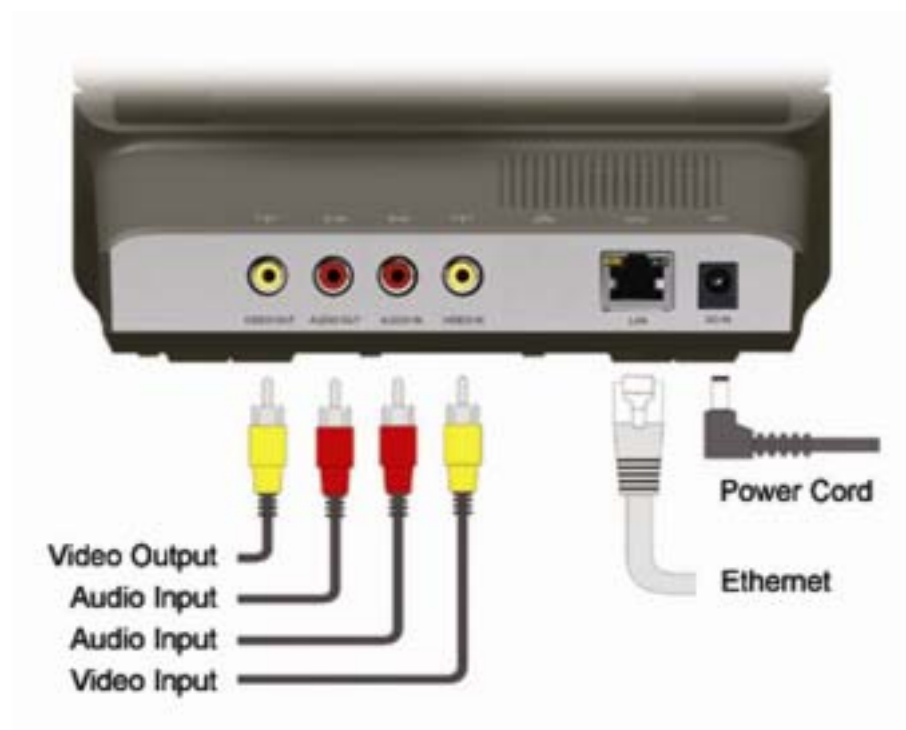


Figure 6 : Cabling Diagram

Power on the Phone

After this phone is properly installed, you may power on it by plug in the power adapter connector. Following boot-up sequences will take place:

- A Welcome message will show on the LCD first. This screen will last for about 5 seconds. Please refer to the first picture from the left below.
- Then you will see a System Loading message on the LCD screen. A vivid color ring is circling during this stage, please refer to second picture from the left below. This screen will last for about 25 seconds.

After boot up sequences are completed, the main page will show on the LCD screen, please refer to the third picture from the left. Now this Phone is ready to use.



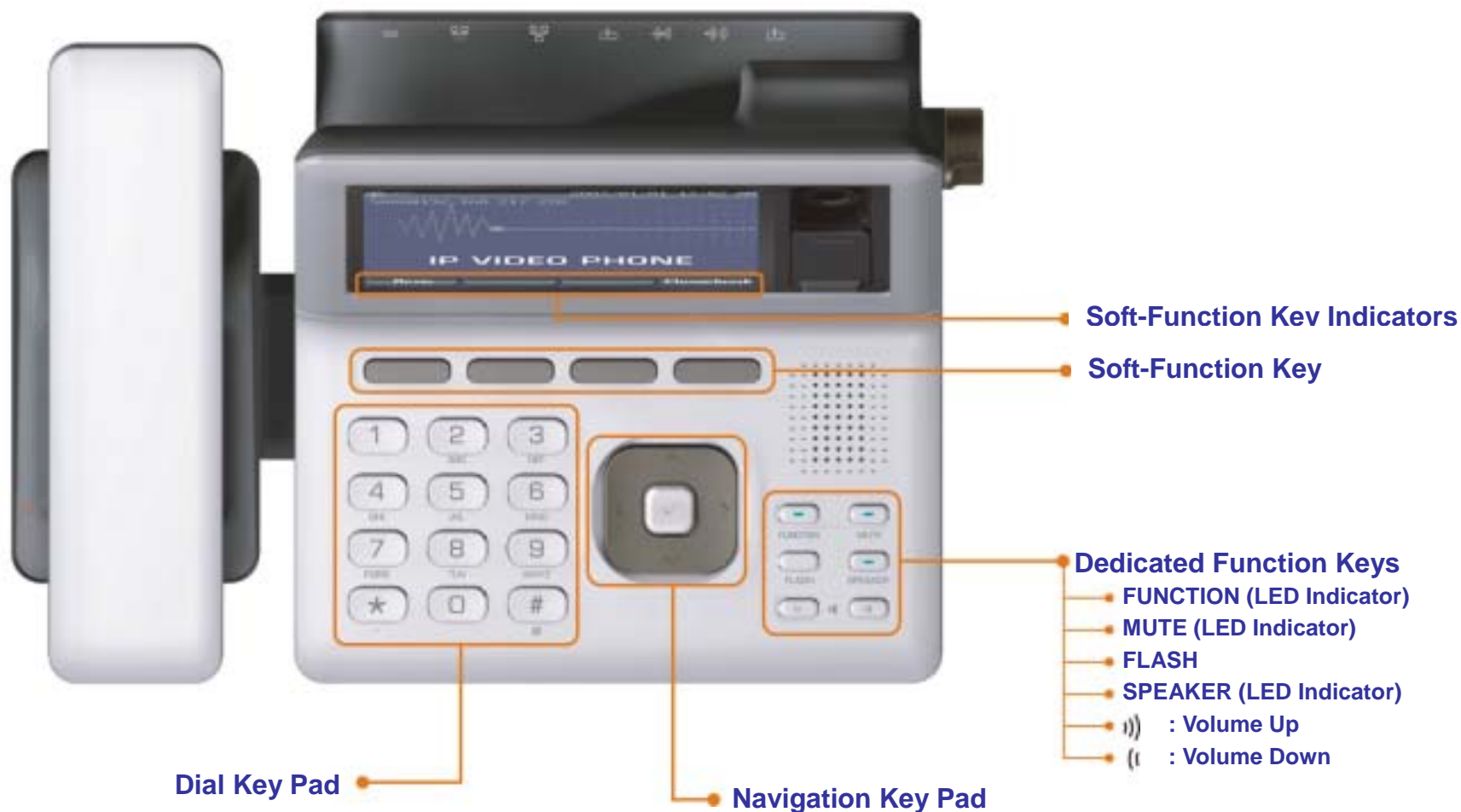
Figure 7 : Booting Up Screens

Chapter 3 : Using the Phone

Knowing Your IP Video Phone



Keys/Buttons Layout



Making Telephone Calls

After this phone has booted up, you may place a call by following ways:

- Lift the handset and key in the preferred phone number on the dialing field, then press Dial button to make a call.
- Press the SPEAKER button and key in the preferred phone number on the dialing field, then press Dial button to make a call.

This phone is able to remember your last called phone number. So if you have made a call before, you will see last called phone number on the dialing field when you lifting the handset or pressing the SPEAKER button. You can press the Dial button to call same number again, or press the numeric keys to cancel pervious number.

You may also make a call from several other locations of the User Interface:

- To dial from the Phonebook. Enter the Phonebook and find the preferred number, then press the Dial button or Enter key (R) of the Navigation Keypad to make a call.
- To dial from the Call Records. Find the preferred phone number in the Call Records, then press the Dial button or Enter key (R) of the Navigation Keypad to make a call.

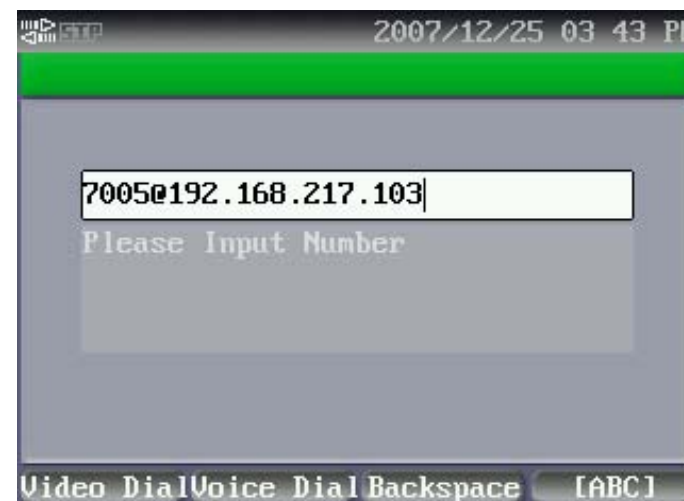


Figure 8 : Making Calls

Receiving a Call

When a call is come in, the phone will ring, and you will see the screen on the right side appeared. You may receive this call by following ways:

- Pick up the handset.
- Press the SPEAKER button.

Muting a Call

You may press the MUTE button to cut the outgoing video and voice when using handset or speaker-phone. This feature allows you to prevent the persons on the other end from hearing what you or someone else at this end is saying.

You can cancel the mute function by pressing the MUTE button again.

Ending a Call

You may end the call by following ways:

- Hang up the handset if you are using the handset.
- Press the SPEAKER button if your are using the speaker phone.



Figure 9 : Receiving Calls

Chapter 4 : Setting up the Phone

This chapter describes how to use and setup your IP Video Phone. You may press the Menu soft-function key to enter this mode. There are 5 major sections in this mode:

- **Phonebook**
- **Call Records**
- **System Settings**
- **SIP Services**
- **Call Services**
- **Photo Album**

You may use [←] and [→] keys to select preferred section, then press Enter key [✓] to enter the sub pages. Then use [↑] and [↓] keys to select preferred item, and then press Enter key [✓] to take further actions.

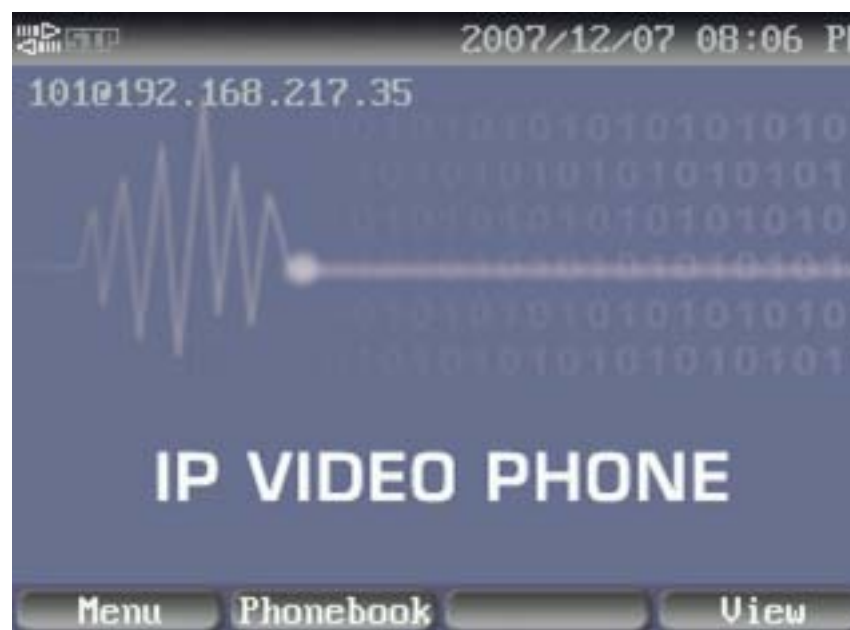


Figure 10 : Phonebook

Phonebook

Phonebook main page includes five options: Search, List, Add New Contact, Import and Export.

Search

This is a smart searching feature, it will show all related contacts while you are keying first few characters. When you see the preferred contact, you may use [↑] and [↓] keys to highlight the target contact, and then press Enter key [✓] to view details.

There are 4 soft-function keys in this page:

Edit	Press this button to edit the details of selected person. There are 5 items in this page: Group, Name, PSTN, Mobile and IP-URI (Uniform Resource Identifier). You may update person or object data here.
Backspace	Press this button to cancel last inputted character.
[ABC]/[123]	Press this button to switch key pad between input characters or numbers.
Exit	Press this button to back to last screen.

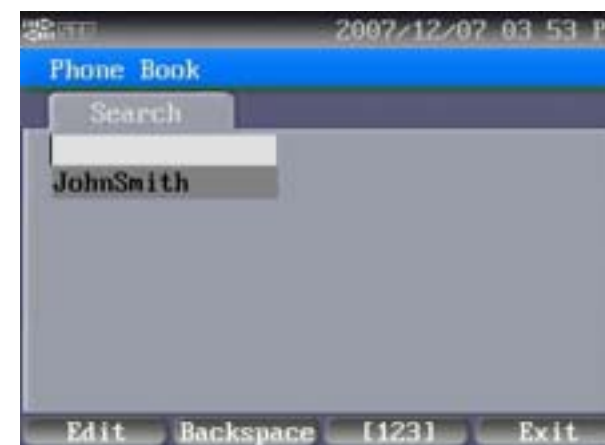


Figure 11 : Search Mode

List

You will see all contacts list in this page by alphabetical sequence. You may use [↑] and [↓] keys to highlight preferred target, and then press [Group], [Edit], [Delete] and [Exit] to proceed further actions.

There are 4 soft-function keys in this page:

Group	You may switch the group to show phone list of selected group by pressing this button. There are total 10 groups and “All Numbers”.
Edit	Press this button to edit the details of selected person. There are 5 items in this page: Group, Name, PSTN, Mobile and IP-URI (Uniform Resource Identifier). You may update person or object data here.
Delete	You may delete selected person or object by pressing this button.
Exit	Press this button to back to last screen.

Add New Contact

You may add new contact phone number in this page. You will see five items:

- Group** - Select preferred group for this new contact by using [←] and [→] keys.
- Name** - You may input name of new contact here.
- PSTN No** - You may input PSTN phone number of new contact here.
- Mobile No** - You may input mobile phone number of new contact here.

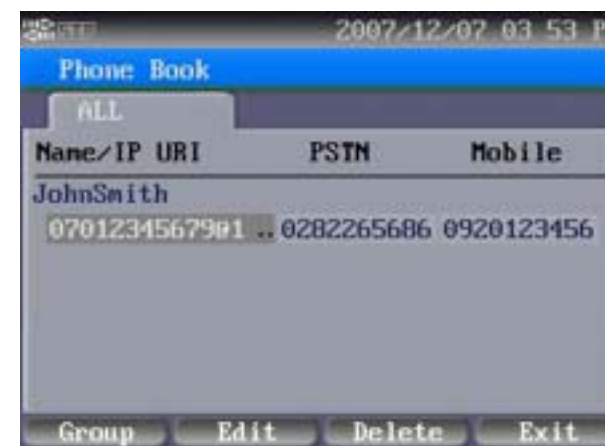


Figure 12 : List Mode

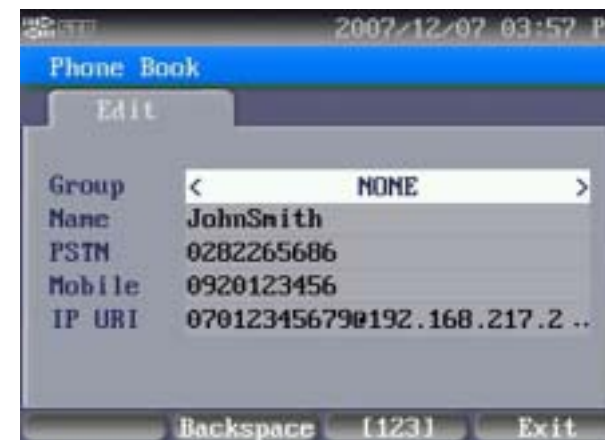


Figure 13 : Add New Contact

- IP-URI** - You may input Domain Name or IP address of of new contact here. The format usually like this:
<Domain>@xxx.xxx.xxx.xxx.

There are 3 soft-function keys in this page:

Backspace	Press this button to cancel last inputted character.
[ABC]/[123]	Press this button to switch key pad between input characters or numbers.
Exit	Press this button to back to last screen.

Edit Group

You may rename group in this page. You will see a list of groups when you enter this page. There are total 10 groups, from Group 1 to Group 10. Use [↑] and [↓] keys to select preferred group, and then go to right side to change the name.

There are 3 soft-function keys in this page:

Backspace	Press this button to cancel last inputted character.
[ABC]/[123]	Press this button to switch key pad between input characters or numbers.
Exit	Press this button to back to last screen.



Figure 14 : Edit Group Mode

Import & Export

You may import and export the phone book in this page. Exported phonebook is you stored in text file format. You can use WordPad to edit the phonebook, and then import it back to IP Video Phone. Phonebook is able to store maximum 200 records.

You have to attach a USB disk before you take Import or Export actions. You will see 2 selections when you enter this page: Import and Export. Use [←] and [→] keys to select preferred item, then press [✓] to execute selected action.

There is 1 soft-function key in this page:

Export	Press this button to export Phonebook to USB Disk.
Import	Press this button to import Phonebook from USB Disk.
Clear	Press this button to delete all records on the Phonebook. This feature is able to prevent duplication data on Phonebook.
Exit	Press this button to back to last screen.

Phonebook File Format

Exported Phonebook data is stored in “CSV” format. CSV format is common used file format for Internet and network applications. You may Notepad to edit this file. There are 4 columns in this file: Name, IP-URI, PSTN, and Mobile. Please note, DO NOT delete the comma “,” between columns.



Figure 16 : Import and Export Mode

Call Records

Find **Call Records** by using [←] and [→] keys. There are 3 options:

Missed Calls, Dialed Calls and **Answered Calls**.

Missed Calls

In this page, you will see a list of all missed calls. This phone keeps maximum 20 missed call records.

You may use [↑] and [↓] keys to select preferred record, then you may press [✓] to dial out this number. There are 4 soft-function keys in this page:

Enter	Press this button to dial out selected number.
Clear	Press this button to delete all missed call records.
Delete	Press this button to delete this missed call.
Exit	Press this button to back to last screen.

Dialed Calls

In this page, you will see a list of all dialed calls, this phone keeps maximum 20 dialed call records.

You may use [↑] and [↓] keys to select preferred record, then you may press [✓] to dial out this number. There are 4 soft-function keys in this page:

Enter	Press this button to dial out selected number.
Clear	Press this button to delete all dialed call records.



Figure 17 : Call Records



Figure 18 : Missed Calls

Delete	Press this button to delete this dialed call.
Exit	Press this button to back to last screen.

Answered Calls

In this page, you will see a list of all missed calls, this phone keeps maximum 20 answered call records.

Use [↑] and [↓] keys to select preferred item, then you may press [✓] to dial selected number or you may user one of 4 soft-function keys in this mode:

Enter	Press this button to dial out selected number.
Clear	Press this button to delete all answered call records.
Delete	Press this button to delete this answered call.
Exit	Press this button to back to last screen.



Figure 19 : Answered Calls

System Settings

Find System Settings by using [←] and [→] keys. There are 5 options: Phone Settings, Network Settings, Video Settings, Audio Settings and Upgrade.

Basic Settings

This mode contains basic settings of this phone. There are 11 items in this page:

- Device ID** - This ID is a unique number giving by manufacturer to identify this device on networks. it is fixed and not revisable.
- Device Name** - This item allows user to give a name to this device. You can use this name to identify this particular device if you have more than one IP Video Phone on the same network. You can input up to 30 characters in this field.
- Date & Time** - You can input your local date and time in this field.
- Date Format** - You can select preferred date format at this field. There are 3 formats available: YYYY/MM/DD, MM/DD/YYYY and DD/MM/YYYY. Use Ñ and Ò keys to select preferred one, then press OK to confirm selection.
- Time Format** - You can select preferred time format at this field. There are 2 formats available: 12 hours and 24 hours system. You may use [←] and [→] keys to select preferred format.



Figure 20 : System Settings



Figure 21 : Basic Settings - 1

- Time Zone** - You may select preferred time zone in this field. This Time Zone is based on GMT (Greenwich Mean Time) system. There are total 25 selections, from GMT-12 to GMT+12. You may use [←] and [→] keys to select preferred format.
- NTP Server1** - You may enable or disable the NTP service here.
- This field allows you to set the main Network-Time-Protocol server address.
- NTP Server2** - You may input an alternate NTP server address here. In case the main NTP server is not available, system will calibrate time according to second server.
- Web UI** - This item allows user to enable or disable the Web User Interface. You can manage this product from a computer with Web User Interface if it is enabled. You may disable this feature for security reasons.



Figure 22 : Basic Settings - 2

Soft-function keys may differ in each page. Following function keys are using in these pages:

Edit	Press this button to select preferred items.
SyncTime	Press this button to synchronize time with NTP server.
OK	Press this button to save changes temporarily. You will be asked to save changes permanently when you press Exit to leave this page
Backspace	Press this button to cancel last inputted character.
Exit	Press this button to back to last screen.

Network Settings

This page allows you to setup the important parameters of network connection. There are 8 items in this mode.

- IP Type** - This item allows you to select type of IP address of this device. There are 3 options: DHCP Client, Fixed IP and PPPoE:
- ◆ **DHCP Client** - If you wish to connect this device to a exist network and get dynamic IP address from the DHCP server, please select this one. You will see all other items in this mode are grayed out. In most of cases, DHCP Client is used for connecting LAN (Local-Area-Network).
 - ◆ **Fixed IP** - If you wish to use fixed IP address to connect to network, you may select this one. You may get Fixed IP when you applying SIP service from carriers or operators. You will see last 2 items for PPPoE are grayed out. Please follow instructions below to setup other parameters for Fixed IP.
 - ◆ **PPPoE** - This selection is for connecting ADSL modem directly. Your phone will trigger ADSL model to connect to Internet automatically when you are dialing phone number. Normally in this case, this device is disconnected with LAN or you do not have exist network.
- IP Address** - You may fill in IP address here if Fixed IP is selected.



Figure 23 : DHCP Client Settings



Figure 24 : Fixed IP Settings

- Sub Netmask** - You may fill in Subnet Mask address here if Fixed IP is selected.
- Def. Gateway** - You may fill in default gateway address here if Fixed IP is selected.
- DNS1** - You may fill in primary DNS server address here if Fixed IP is selected.
- DNS2** - You may fill in secondary DNS server address here if Fixed IP is selected.
- PPPoE ID** - You may fill in PPPoE account ID or name here if PPPoE is selected in IP type selection.
- PPPoE PSWD** - You may fill in PPPoE account password here if PPPoE is selected in IP type selection.



Figure 25 : PPPoE Settings

Soft-function keys may differ in each page. Following function keys are using in these pages :

Edit	Press this button to select preferred items.
OK	Press this button to save changes temporarily. You will be asked to save changes permanently when you press Exit to leave this page
Backspace	Press this button to cancel last inputted character.
Exit	Press this button to back to last screen.

Video Settings

This page contains 7 parameters of video streaming and quality.

- Video Def.** - You may disable video streaming here. Select “Off” to make audio only phone calls.
- Bandwidth** - This item allows you to select preferred bandwidth of video streaming. There are 6 options: 768Kbps, 512Kbps, 384Kbps, 256Kbps and 128Kbps. You shall select suitable bandwidth to meet Internet condition. You may have to check available bandwidth with your service provider. Default setting is 384Kbps.
- Quality** - This item allows you to select preferred video quality. There are 5 options: Excellent, Good, Average, Acceptable and Worst. Please note that better quality creates higher bit-rate and requires larger bandwidth. You may see broken video if you select better quality but with not enough bandwidth. Default setting is Average.
- Scene Color** - This item allows you to adjust color balance of the camera module. There are 3 options: Yellow Lamps, Orange Lamps and Fluorescent Light. Please select a suitable one to meet your room lighting environment. Default setting is Yellow Lamps.
- Brightness** - This item allows you to adjust brightness of the camera module. There are 10 levels, from 0 to 9. Higher number gives brighter image. Default setting is 5.
- Lightness** - This item allows you to adjust lightness of LCD panel. There are 10 levels, from 0 to 9. Default setting is 5.
- Video Fmt.** - This item allows you to select the video format of LCD Display or



Figure 26 : Video Settings

TV-OUT port (specified models). There are 2 options: NTSC and PAL.

Soft-function keys may differ in each page. Following function keys are using in these pages:

Edit	Press this button to select preferred items.
OK	Press this button to save changes temporarily. You will be asked to save changes permanently when you press Exit to leave this page
Exit	Press this button to back to last screen.

Audio Settings

This page contains 4 parameters for adjusting audio qualities.

- CODEC** - This item allows you to select the priority of audio CODEC. This phone will associate caller's IP phone according to this priority. This phone supports 2 audio CODECs: G.711 and G.729. There are 2 options: <G.711/G.729> and <G.729/G.711>. Default setting is <G.711/G.729>.
- Ring Volume** - This item allows you to set volume of ring tone. There are 10 levels, 0 ~ 9. Default setting is 4.
- Handset Vol.** - This item allows you to set volume of handset. There are 10 levels: 0 ~ 9. Default setting is 9. You have to pick up the handset when you are setting the volume.
- Speaker Vol.** - This item allows you to set volume of speaker. There are 10



Figure 27 : Audio Settings

levels, 0 ~ 9. Default setting is 4.

Soft-function keys may differ in each page. Following function keys are using in these pages:

Edit	Press this button to select preferred items.
OK	Press this button to save changes temporarily. You will be asked to save changes permanently when you press Exit to leave this page
Exit	Press this button to back to last screen.

Upgrade

This page allows you to upgrade firmware of this phone. This upgrade goes through the USB Mass Storage (USB Memory Disk). There are 2 options:

SW Version - Shows current firmware version.

AutoUpgrade - You may enable this feature if it is available from service provider.

Please follow these steps to take upgrade:

1. Download the new firmware into a USB disk.
2. Connect the USB Disk to USB port of this phone. Use USB cable that comes with the package if the connector format is not match.
3. Press "**Upgrade**" to start, you will see screen like Figure 29 appeared.



Figure 28 : Upgrade Page

SIP Services

This section allows you to setup necessary parameters of SIP services.

There is only 1 option: **Add New Service**.

Add New Service

There are 10 parameters for setting the SIP service:

- Phone No.** - You have to fill in the phone number here. Normally it is provided by service provider. It also can be an extension number if this phone is connected to a IP PBX.
- Display Na.** - Initial of Display Name. This name will show on the IP phone of called parties. You may fill in the preferred name here.
- SIP Mode** - This item allows you to select the working model of SIP service. Select "Server" mode if this phone is connect to a SIP server or IP PBX. Default setting is Peer-TO-Peer.
- Protocol** - You may select the correct low level communication protocol here. There are 2 options: **UDP** and **TCP**. You have to confirm which one the service is using from your service provider. Default setting is UDP.
- Proxy** - You may fill in IP address or domain name of the SIP Proxy Server here.
- Registrar** - You may fill in IP address or domain name of SIP Registrar Server here.



Figure 30 : SIP Setting Page 1



Figure 31 : SIP Setting Page 2

- Reg. Time** - Initial of Registration Time. This item is a parameter of SIP service. You may fill in the effective registration period of SIP service here. You have to contact your service provider to get correct setting. Default setting is 3600 seconds.
- Acct. ID** - You may fill in your account name of SIP service here.
- Acct. PSWD** - You may fill in the password of your SIP service account here.
- SE Timer** - Initial of Session Timer. This is a parameter of SIP service. You may fill in the Session Timer period of SIP service. You have to contact your service provider to get correct setting. Default setting is 1800 seconds.

Soft-function keys may different in each page. Following function keys are using in these pages:

Edit	Press this button to select preferred items.
OK	Press this button to save changes temporarily. You will be asked to save changes permanently when you press Exit to leave this page
Backspace	Press this button to cancel last inputted character.
Exit	Press this button to back to last screen.

Call Services

You can setup call services of this phone here. There are 2 services available:

- DND** - Initials of "Do Not Disturb". All phone calls will be rejected if this service is enabled. Caller will here busy tone when call this number.
- Auto Answer** - This feature allows this phone to answer incoming call automatically. There are 2 options: Disable and Immediately.

Soft-function keys may different in each page. Following function keys are using in these pages:

Edit	Press this button to select preferred items.
OK	Press this button to save changes temporarily. You will be asked to save changes permanently when you press Exit to leave this page
Exit	Press this button to back to last screen.



Figure 32 : Call Services

Photo Frame

This phone comes with Photo Frame and Screen Saver features.

Photo Frame

You may store JPEG photos in embedded Flash Disk, and then playback the photos on LCD display. The photos in embedded Flash Disk are only for playing on this phone, not for other purpose for they will be resized to a proprietary size.

Please follow these steps to import photos:

1. Select Photo Frame, and then press Enter [✓].
2. Select source, from Local Memory or USB Disk.
3. This Phone will locate image and create thumbnails. It may take minutes if the photo size is too large. The largest photo size that this phone is able to convert is 4 Mega-Bytes (2048x2048).
4. If you select USB Disk, then you may press “Import” button to upload images into embedded Flash Disk.
5. If you select embedded Flash Disk, then you may use [←], [→], [↑] and [↓] keys to select photo, then press Delete button to erase photo from embedded Flash Disk, or press View button to view photo at full screen.

Screen Saver

There are 2 options in this page:



Figure 33 : Photo Frame Main Page



Figure 34 : Photo Frame – Select Source

- Saver Type** - You may select “Photo Slideshow” or Clock” here.
- Active Time** - You may select active time here. There are 3 options: 1 minute, 3 minutes and 5 minutes.

Beside Photo Slideshow or Screen Saver will activate in selected period, in order to extend the life time of LCD display, the screen will turn off after 10 minutes from the last pressing button action.

Soft-function keys may different in each page. Following function keys are using in these pages:

Enter	Press this button to dial selected preferred item.
Play	Press this button to playback the photos is selected memory disk.
View	Press to view selected photo in full screen.
Delete	Press to erase photo from selected memory disk.
Cancel	Press to back to last level.
Edit	Press this button to select preferred items.
OK	Press this button to save changes temporarily. You will be asked to save changes permanently when you press Exit to leave this page
Backspace	Press this button to cancel last inputted character.
Exit	Press this button to back to last screen.



Figure 35 : Photo Frame – Thumbnails

Appendix A : Regulatory Information

FCC STATEMENT

This product has been tested and complies with the specifications for a Class B digital device, pursuant to Part 15 of the FCC Rules. These limits are designed to provide reasonable protection against harmful interference in a residential installation. This equipment generates, uses, and can radiate radio frequency energy and, if not installed and used according to the instructions, may cause harmful interference to radio communications. However, there is no guarantee that interference will not occur in a particular installation. If this equipment does cause harmful interference to radio or television reception, which is found by turning the equipment off and on, the user is encouraged to try to correct the interference by one or more of the following measures:

- Reorient or relocate the receiving antenna
- Increase the separation between the equipment or devices
- Connect the equipment to an outlet other than the receiver's
- Consult a dealer or an experienced radio/TV technician for assistance

FCC Radiation Exposure Statement

This equipment complies with FCC radiation exposure limits set forth for an uncontrolled environment. This equipment should be installed and operated with minimum distance 20cm between the radiator and your body.

EC DECLARATION OF CONFORMITY (EUROPE)

Manufacturer declares that this product conforms to the specifications listed below, following the provisions of the European R&TTE directive 1999/5/EC:

- EN 301 489-1, 301 489-17 General EMC requirements for Radio equipment.
- EN 609 50 Safety
- EN 300-328-1, EN 300-328-2 Technical requirements for Radio equipment.

Caution: This equipment is intended to be used in all EU and EFTA countries. Outdoor use may be restricted to certain frequencies and/or may require a license for operation. Contact local Authority for procedure to follow.

Note: Combinations of power levels and antennas resulting in a radiated power level of above 100 mW equivalent isotropic radiated power (EIRP) are considered as not compliant with the above mentioned directive and are not allowed for use within the European community and countries that have adopted the European R&TTE directive 1999/5/EC.